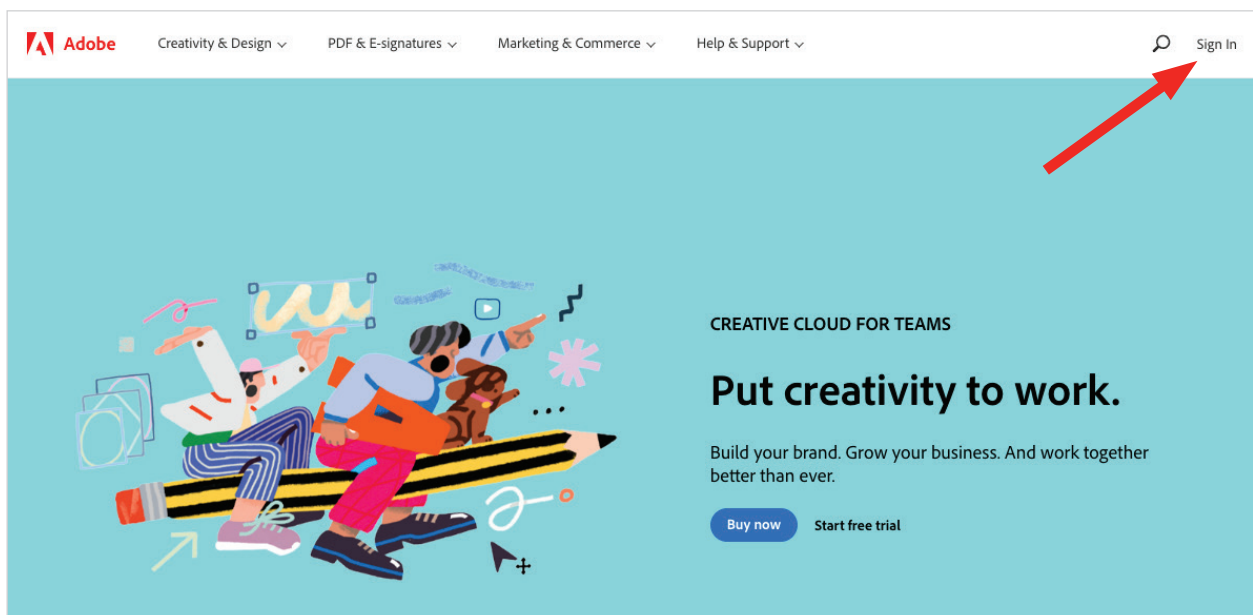


Adobe Creative Cloud for education deployment



Accessing your Creative Cloud license at home

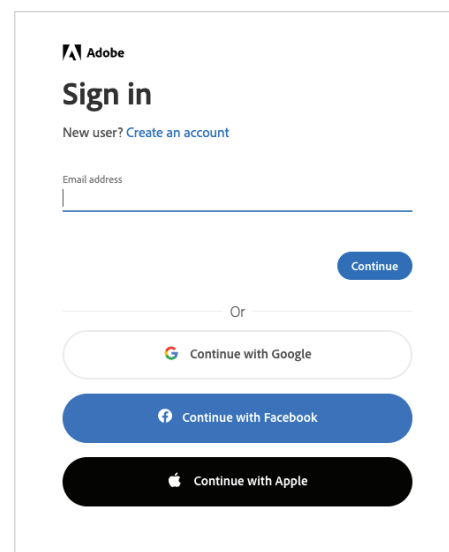
1. Go to adobe.com and select “Sign In” in the upper right.



2. Enter the email address tied to your Creative Cloud license. Do not choose “Continue with Google, Facebook, or Apple.”

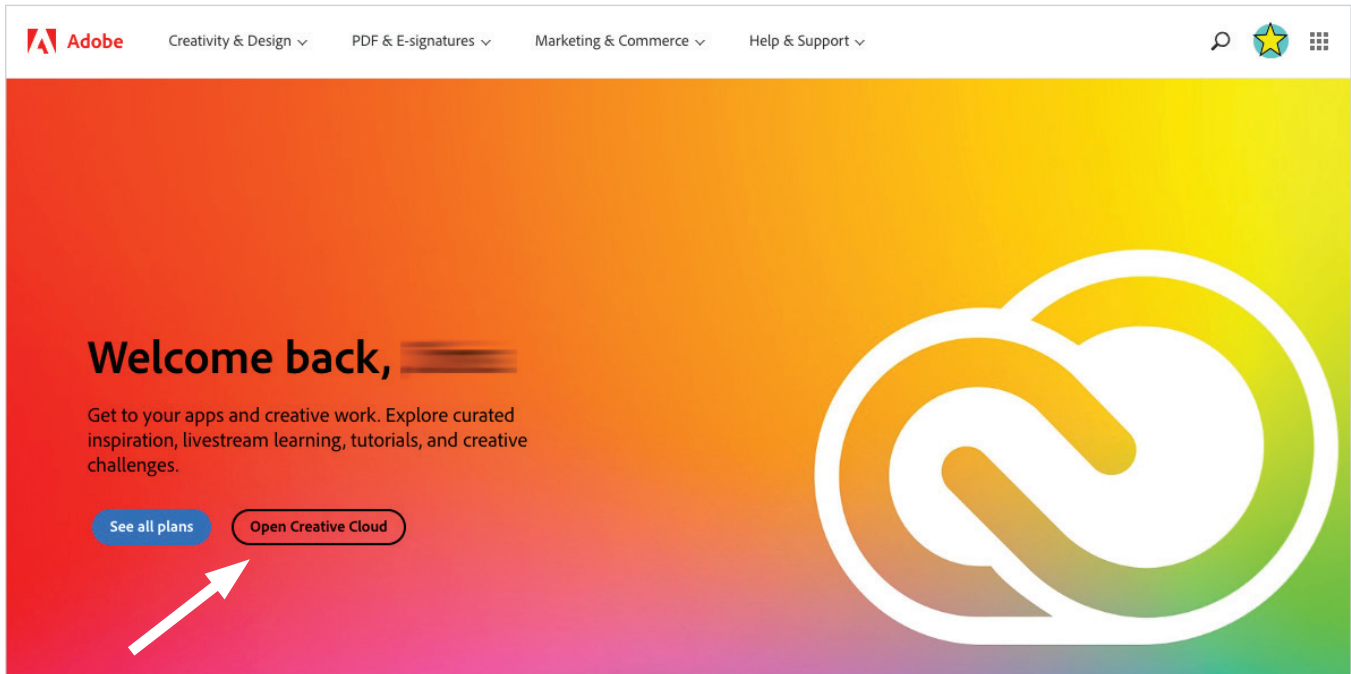
Follow the sign-in directions found [here](#) to sign in with your school account.

If you have an Adobe ID, choose “personal account” and enter your password.

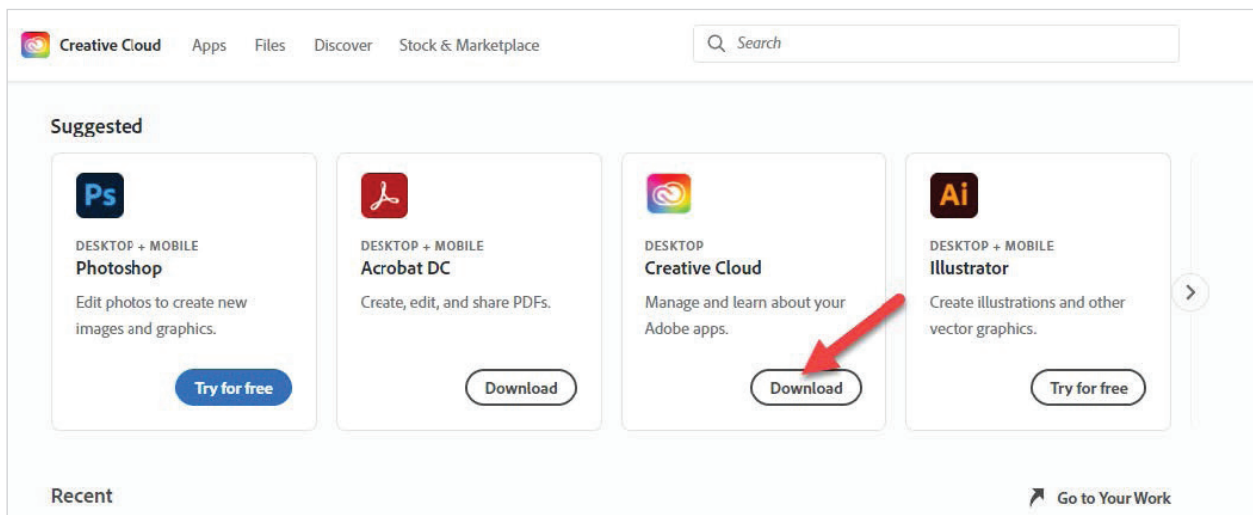


A successful sign-in will take you to your account page. Choose "Open Creative Cloud."

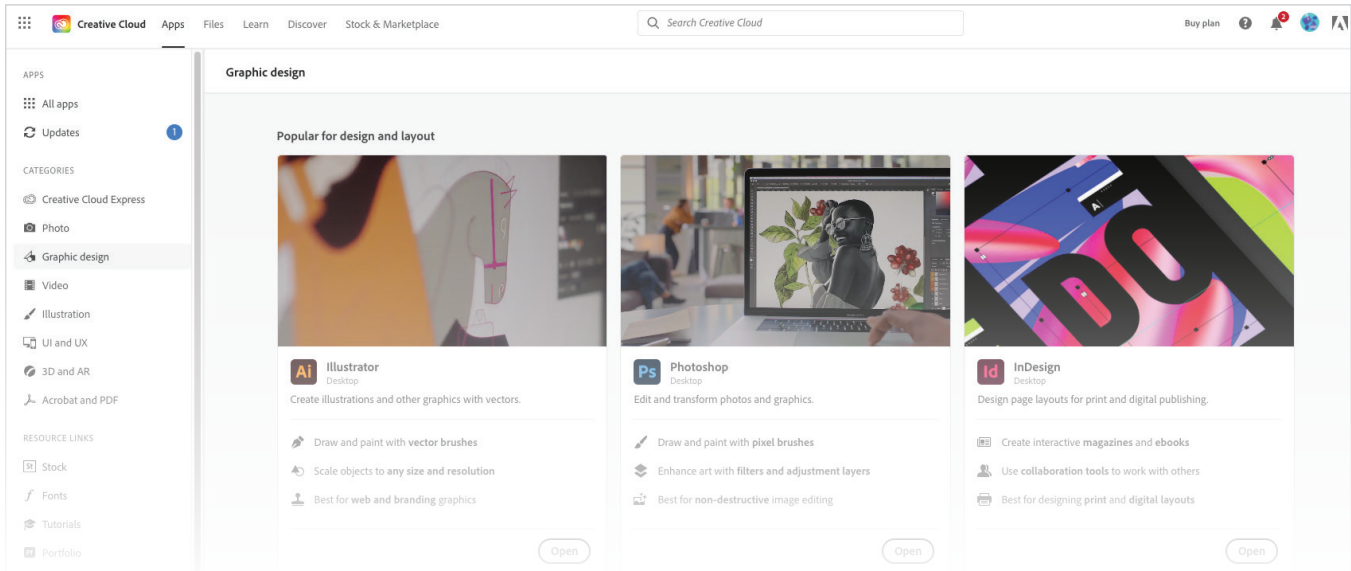
Note: The yellow star notes where the Sign Out option lives.



3. You may choose to download the desktop application onto your computer OR access your apps online by selecting "Apps."



You can now access all the Apps and Services associated with your license. For a short tour of the features of the Desktop Application, visit [Creative Cloud on Your Desktop: A Portal To Your Creative World | Adobe Creative Cloud](#)



Please remember, some features may not be available depending on your ID type or licensing structure.

