

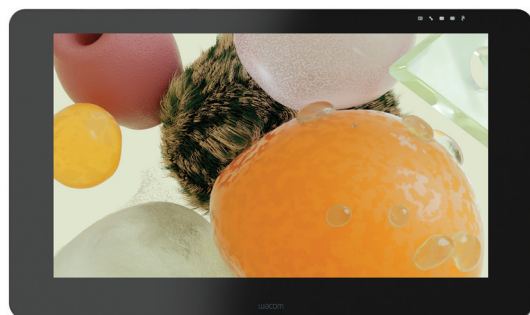


Wacom®

Cintiq Pro

Create directly on screen with our most natural pen experience

The Wacom Cintiq Pro 32 and 24 are advanced creative pen displays. Combined with Wacom Pro Pen 2, they offer an experience designed to enhance every creative breakthrough.



Featured artist: David McLeod

A display that looks – and feels – totally natural

The etched glass screen provides a distinct, tactile experience as you draw, mimicking the feel of a pen on paper while reducing unwanted glare and reflections.

The display offers realistic color accuracy of up to 99% Adobe RGB, plus, at 4K resolution, you can see every detail of your creation in pinpoint accuracy.

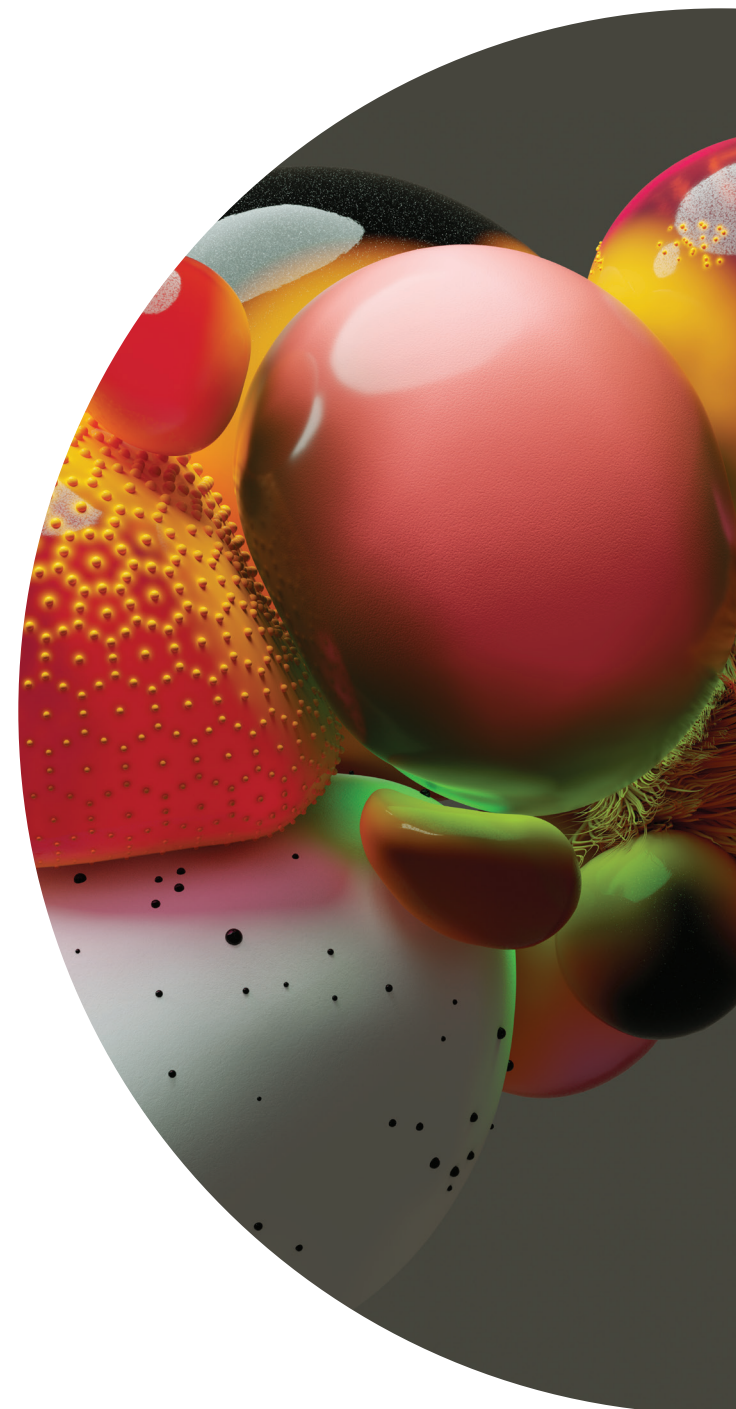
Wacom Pro Pen 2: natural and precise

Our state-of-the-art creative pen technology. 8,192 levels of pressure sensitivity and unparalleled tilt recognition means that every stroke, every move of your hand is followed with unerring accuracy.

Key features

- Includes Wacom Pro Pen 2
- Premium 4K screens, complete with world class color performance of up to 99% Adobe RGB.
- Multi-touch gestures*, the on-screen keypad, radial menus and the ExpressKey™ Remote offer a more intuitive experience.
- Built-in legs raise your Wacom Cintiq Pro from 5° to 20°.
- The optional Wacom Ergo Stand lets you raise, tilt and rotate your Cintiq Pro to find the most natural position for you.
- Compatible with Mac and Windows.

*on touch models



Live. Dare. Create.





wacom® Cintiq Pro



The Cintiq Pro That's Right for You

| Model | Wacom Cintiq Pro 24 | Wacom Cintiq Pro 32 |
|--|---|---|
| Model Number | DTK2420 creative pen display & DTH2420 creative pen display touch | DTH3220 - creative pen display touch |
| Display Size / Resolution | 23.6 in (59.94 cm) / 4K: Ultra HD (3840 x 2160) | 31.5 in (80 cm) / 4K: Ultra HD (3840 x 2160) |
| Active Area | 20.55 x 11.57 in (522 X 294 mm) | 27.44 x 15.43 in (697 x 392 mm) |
| Size | 26.65 x 15.5 x 1.9 in (677 x 394 x 47 mm) | 33.62 x 19.92 x 2.1 in (854 x 506 x 53.25 mm) |
| Weight | 15.43 lbs (7 kg) without optional stand | 28.66 lbs (13 kg) without optional stand |
| Color Performance | 1.07 billion colors (10 bit), 99% Adobe RGB | 1.07 billion colors (10 bit), 98% Adobe RGB |
| Aspect Ratio / Brightness | 16:9 / 350 cd/m ² | 16:9 / 340 cd/m ² |
| Contrast Ratio / Response Rate | 1000:1 / 12 ms | 1000:1 / 8 ms |
| Applies to both models | | |
| Viewing Angle | 176° (88°/88°) H, (88°/88°) V | |
| Industry Standard Pre-sets | 6500° K whitepoint default | |
| Connectivity | 4 x USB3 ports*, 1 x USB C port, 1 x HDMI2.0 port, 1 x DP port, 2 USB-A Ports (one for ExpressKey Remote dongle), audio headset jack, built-in microphone | |
| Graphics Input | USB type C port (supporting DisplayPort Alternate Mode) or or DisplayPort or HDMI2.0 port (required for 3840 x 2160 resolution) | |
| Multi-Touch | Pan, zoom and rotate gestures available in most applications including Adobe® Photoshop® and Illustrator®. Available on Touch models only (DTH-2420 & DTH3220) | |
| Pen | Battery-free Pro Pen 2 with 2 customizable side switches and 8192 pressure levels in both pen tip and eraser (patented electromagnetic resonance method) | |
| Pen Tilt Recognition / Range | ±60 levels / 60 degrees | |
| ExpressKey™ Remote / Productivity Boosters | 17 customizable, application-specific ExpressKeys, Touch Ring, Rocker Ring/Home Button, Precision Mode, Display Toggle, Radial Menu and dedicated pan, scroll, zoom, brush size, time-saving on-screen settings, on-screen keypad and radial menu | |
| Security | Kensington® Lock Port (lock purchased separately) | |
| Ergonomics | Built-in stand (5° w/o legs or 20°w/ legs). Optional Wacom Ergo stand with rotation | |
| Compatibility / System Requirements | PC: Windows® 7 or later (latest service pack/build), Mac: OS X® 10.11 or later (latest update); USB-C port with DisplayPort Alternate Mode (UHD), or Mini DisplayPort/DisplayPort (UHD) and USB-A, or HDMI 2.0 (UHD) and USB-A; Internet access for driver download. | |
| What's Included | Wacom Cintiq Pro 24 or 32, Wacom Pro Pen 2, Wacom Pro Pen 2 with 4-color pen ring set, ExpressKey™ Remote (with USB-A RF dongle and 30cm micro-USB to USB charger cable), Pen stand with 10 replacement nibs (6 standard, 4 felt) and nib removal tool, Pen holder, 180W AC adapter and 1.8m power cable, 1.5m USB-C to USB-C cable, 3m DisplayPort to DisplayPort cable, 3m HDMI2.0 to HDMI2.0 cable, 3m standard USB-A to USB-A cable, DisplayPort to Mini DisplayPort adapter, Quick Start Guide, Regulation sheet, cleaning cloth | |
| Additional Accessories | Wacom Ergo Stand, Wacom Color Manager, Wacom Pro Pen 3D, Wacom Keyboard, Replacement Wacom nibs (standard and flex) for Wacom Pro Pen 2, Additional previous generation pens (Classic, Airbrush, Art, Pro Pen), Replacement ExpressKey Remote, Replacement Wacom Pro Pen 2 | |
| Limited Warranty | 2 years in USA, Canada, and Latin America | |

Specification numbers like display size, active area and weight are approximate and subject to change.

*When connected to host computer over USB-C, Cintiq Pro USB 3.0 ports run at USB 2.0 speeds to accommodate 4K video bandwidth over USB-C.

