

CorelDRAW[®]

GRAPHICS SUITE 2023

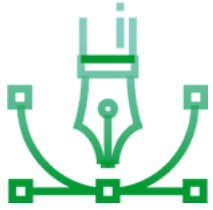
"The most versatile digital design tool"

—Leonardo Cardona Perez
Vector illustrator, Colombia

Creativity meets productivity in CorelDRAW Graphics Suite:
your fully-loaded, professional design toolkit for delivering breathtaking vector illustration, layout, photo editing, and typography projects with incredible efficiency.



Why subscribe to CorelDRAW Graphics Suite?



Design

Produce unique illustrations, signage, logos, and more—on Windows or Mac—and on-the-go with the web or iPad app.



Collaborate

Collaborate with clients and colleagues using CorelDRAW.app™ to gather real-time feedback from one or many reviewers.



Done

Deliver exceptional results in less time, thanks to incredibly productive tools for any type of output.

A budget-friendly subscription provides incredible ongoing value with instant, guaranteed access to exclusive new features and content, peak performance, and support for the latest technologies.



"Powerful yet easy to use, CorelDRAW is my vector illustration toolkit of choice!"

— OCTO, Brazil

Who's it for?

Enjoyed by diverse designers, industries, and businesses worldwide, from marketing, commerce and sign making, to engineering, manufacturing, and more.

Graphics and creative professionals

Design logos, brochures, sales and marketing materials, training tools, and other detailed visuals for web or print.

Production professionals

Produce signage, large-format prints, vehicle wraps, apparel and textile design, embroidery, schematics, engraving, and much more.

Occasional graphics users in businesses

Create or manipulate visually rich projects for in-house use, from web graphics and sales presentations, to sell sheets and visual aids.

Competitive advantages

All-in-one design and layout

Enjoy integrated functionality for graphic design and layout in one application.

Flexible, affordable purchasing

Subscribe to a full suite of professional graphic design applications for about the cost of a competitor's single-application subscription. Or, choose a perpetual license to own your software outright.

FREE Pantone support

Ensure your colors are accurate for output with integrated access to Pantone® color libraries at no additional cost.

Native OS experience

Create how you're used to creating on Windows or Mac, with award-winning software that's been built from the ground up for your platform of choice.

Design anytime, anywhere **SUBSCRIBER EXCLUSIVE!**

CorelDRAW is also available as a vector illustration iPad and web app, so you can access your work remotely when you're not near your computer.

Easy to learn & use

Create confidently with a personalized in-app learning experience, bringing relevant tips, tutorials, and practice projects to your fingertips, based on the tools you select, how you work, and what you want to see.

What's new?

Reap the rewards of a CorelDRAW Graphics Suite subscription, which entitles you to exclusive features, workflows, apps, and content not otherwise available.

March 2023 Subscriber Update

Deliver projects with increased confidence thanks to meaningful product quality improvements based on direct user feedback. Turn creative ideas into beautiful results faster with the new Variable Outline tool, enabling you to interactively adjust the line width along a path's outline for smooth transitions on seamless curves. Kickstart designs quicker with exclusive cloud access to over 200 creative templates at your fingertips and learn new techniques with personalized practice project recommendations suited to your skill level and experience.

Looking for what's new in CorelDRAW Graphics Suite 2023 for one-time purchase?

www.coreldraw.com/en/product/coreldraw/compare/



Compare purchase options

	CorelDRAW Graphics Suite Subscription	CorelDRAW Graphics Suite 2023 (One-time purchase)
Full featured Enjoy exclusive cloud-based features & workflows.	✓	–
Latest and greatest Instant access to the latest updates at no extra cost.	✓	–
Budget-friendly Lowest upfront cost and the flexibility to stop paying for a defined period as your software needs change.	✓	–
Ongoing support Guaranteed support for the latest operating systems, devices, and technologies.	✓	–
Product ownership Pay once to own and use the software version for as long as you choose.	–	✓

Core features

Vector illustration

Turn basic lines and shapes into complex works of art, and create curves with a robust drawing toolbox for professional design. Add creative effects with tools like Contour, Envelope, Mesh Fill, Impact, and more.

Page layout

Find all the tools you need to create layouts for brochures, multi-page documents and more. Toggle between single page and multipage editing for creative freedom to work the way you want.

Photo editing

Adjust color and tone, remove imperfections, correct perspective and more with Corel PHOTO-PAINT's powerful layer-based photo editing tools. Improve the size and quality of your images with artificial intelligence, and use AfterShot HDR to create stunning High Dynamic Range photos from your RAW images.

Typography

Add effects like block shadows and contours to text, fine-tune fonts responsively, fit text to paths, and more, with a complete set of typography tools.

Collaboration **SUBSCRIBER EXCLUSIVE!**

Accelerate your creative process with a cloud-based collaboration workflow that offers a dramatically better way to connect with clients and colleagues on designs in real-time. Gather live comments and annotations from one or many contributors right within your CorelDRAW design file and resolve feedback simultaneously.

Web graphics tools

Develop captivating web content with a collection of web graphics tools and presets. Ensure any graphic you export for the web has crisp edges, thanks to a series of pixel-perfect tools.

Professional print output

Experience unconstrained control over output to all media types, with advanced printing options that put CorelDRAW ahead of the competition. With a powerful color management engine and integrated Pantone color support, you'll have complete confidence that your colors are accurate before you print.

What's included?

Main Applications



CorelDRAW®

Vector illustration and page layout.



Corel PHOTO-PAINT™

Image editing and pixel-based design.



Corel® Font Manager

Font exploration and management.



PowerTRACE™

AI-powered bitmap-to-vector tracing (included as part of the CorelDRAW application).



CorelDRAW.app™

Online graphic design via web browser and iPad app. **SUBSCRIBER EXCLUSIVE!**



CAPTURE™

Screen capture tool (Windows only).



AfterShot™ HDR

RAW photo editor.



Content

- 7,000 clipart, digital images, and vehicle wrap templates.
- 1,000 high-resolution digital photos.
- Over 1,000 TrueType and OpenType fonts plus integrated access to over 1,400 Google Fonts families.
- 200+ professionally designed templates.
- Over 600 fountain, vector, and bitmap fills.

Documentation & training

- Quick Start Guide
- Online Help
- Online training videos
- Built-in learning docker/inspector
- Discovery files accessible through "Get Started" in the Welcome screen

For more information, please contact your sales representative or email partners@alludo.com

© 2023 Corel Corporation. All Rights Reserved.

Corel, the Corel balloon logo, CorelDRAW, the CorelDRAW balloon logo, Aftershot, CAPTURE, CorelDRAW.app, Corel PHOTO-PAINT, and PowerTRACE are trademarks or registered trademarks of Corel Corporation in Canada, the U.S., and/or elsewhere. Apple, macOS, iPad and Mac are trademarks of Apple Inc. Google is a trademark of Google LLC. All other company, product and service names, logos, brands and any registered or unregistered trademarks mentioned are used for identification purposes only and remain the exclusive property of their respective owners. Use of any brands, names, logos or any other information, imagery or materials pertaining to a third party does not imply endorsement. We disclaim any proprietary interest in such third-party information, imagery, materials, marks and names of others. For all notices and information about patents please visit www.corel.com/patents

Original sample artwork is provided by third parties and is used, and/or modified, by permission, unless otherwise agreed with such parties.

System Requirements

Windows

- Internet connection required for registration and updates
- Windows 11 or Windows 10 (Version 21H2 or later), 64-bit, with latest Updates
- Intel Core i3/5/7/9 or AMD Ryzen 3/5/7/9/Threadripper, EPYC
- OpenCL 1.2-enabled video card with 3+ GB VRAM
- 8 GB RAM
- 5.5 GB hard disk space for application and installation files
- Mouse, tablet or multi-touch screen
- 1280 x 720 screen resolution at 100% (96 dpi)
- Internet connection is required to install and authenticate CorelDRAW Graphics Suite and access some of the included software components, online features and content.

Mac

- macOS Ventura (13) or macOS Monterey (12), with the latest revision
- Apple M1 (or higher) or Multicore Intel processor
- OpenCL 1.2-enabled video card with 3+ GB VRAM
- 8 GB RAM
- 4 GB available hard disk space for application files (Solid-state drive recommended); Case-sensitive file systems are not supported
- 1280 x 800 screen resolution (1920 x 1200 recommended)
- Mouse or tablet
- Internet connection is required to install and authenticate CorelDRAW Graphics Suite and access some of the included software components, online features and content.